



THE **MAINE** *MAIL*



2016 Summer / Fall Edition

MANITOU (SINCE 1970)

FULLBLOOD GENETICS

FEMALE SALE

Friday, December 16th at Marsden with DLMS

HOW CAN YOU
GO WRONG!!!

Two New French Bloodlines in this Bull!

GARY & SANDY GRAHAM

Marsden, SK (306) 823-3432 - grahamgs@sasktel.net - manitoumaineanjou.ca



Two New French Bloodlines



Guess who owns me???

More to follow in the next issue...





THE MAINE MAIL

Official publication of the Canadian Maine-Anjou Association

CANADIAN MAINE-ANJOU ASSOCIATION

Office: Tuesdays & Wednesdays 8:00am to 4:30pm

5160 Skyline Way N.E., Calgary AB T2E 6V1

Phone: 403.291.7077 Fax: 403.291.0274

Email: cmaa@maine-anjou.ca

www.maine-anjou.ca

CMAA BOARD OF DIRECTORS:

President: Scott McCormack

First Vice-President: Kelly Smith - Fraser

Second Vice-President: Sid Wilkinson

Past President: Stuart Byman

Treasurer: Brian Brown

Secretary: Tracy Wood

Clayton Elliot

Myles Hansen

Kody Roddick

Bryan Zimmer

Editor & Design: Heidi Voegeli-Bleiker

Cover Photo: Heidi Voegeli-Bleiker

Printing: McAra Printing, Calgary

Winter/Spring Magazine:

Ad Deadline January 1st, 2017

Summer/Fall Magazine:

Ad Deadline August 1st, 2017

Full Color	Cost	Size	Bleed
Full Page	\$250	8.5 x 11"	1/4"
Half page horizontal	\$150	8.5 x 5.5"	1/4"
Quarter page	\$ 80	4.25 x 4.4"	1/4"
Inside Front/Back	\$275	8.5 x 11"	1/4"
Back Page	\$300	8.5 x 11"	1/4"
Business Card	\$ 50	7 x 4cm	no bleed

CONTENTS



Deanna Wise and Blake Nelson, Vice President AMAA



Deborah Wilson, BIXS



Dr. Bob Weaber



Synergy Success



Westerner Days

CONTENTS FEATURES:

CMAA News	6,8
CMAA Annual Meeting	10,11
Association News	12,14
Douglas Test Station	14
BIXS Today	16
Understanding and Using EPDS	18,22,24
Synergy Success	28,29
Westerner Days	30,31,32
4-H 2016	34,35
Gary D Smith Memorial Scholarship	36
Upcoming Events	38

Advertisers Index:

Manitou Maine-Anjou, Gary & Sandy Graham	2
EDJE	7
Rusylvia Cattle Co.	9
Rawluk & Horner Cattle	13
Deagle Cattle Company Ltd.	15
Badgerhill Maine-Anjou	17
Gilcroft Farms	19
Elmview Maine- Anjou, Harolf & Lynda McKee	20
Buckwheat Acres Inc, Timothy McKee	21
Nuhaven Cattle Co.	23
Wilkinrideg Stock Farm, Sid Wilkinson	25
Farmfair	26
Perry Maine-Anjou Farm, Dave Perry	27
Agribition	27
Rapid Creek Ranch, Brian & Sharon Brown	33
Hansen Livestock, Myles & Colleen Hansen.....	37
Alan Martinell	38
Wise Maine-Anjou Ranch	38
Duffy Land & Cattle	38
Vandy Cattle	39
Lightning Strike Cattle Co./ McCormack Family Ranch.....	40

C.M.A.A. PAST PRESIDENTS

1970-1971	Dr. Frederick George Day	Alberta
1971-1974	Stan Spicer	Alberta
1974-1976	George Linder	Alberta
1976-1977	Harold Clements	Manitoba
1977-1978	Bruce Barkley	Alberta
1978-1979	Jack Lee	Alberta
1979-1980	Harlen Turville	Alberta
1980-1981	Vern Drader	Sask.
1981-1984	Grant Moffat	Manitoba
1984-1985	Farnon Keeler	Sask.
1985-1987	Neil McLeod	Sask.
1987-1989	Murray McGillivray	Sask.
1989-1991	Gary Smith	Alberta
1991-1994	Dennis Janz	Manitoba
1994-1995	Murray McGillivray	Sask.
1995-1996	Carmen Fallon	Manitoba
1996-1998	Greg Mappin	Alberta
1998-2000	Alex Jensen	Alberta
2000-2001	Les Voice	Sask.
2001-2003	Carmen Fallon	Manitoba
2003-2004	Keith McMillan	Alberta
2004-2007	Sid Wilkinson	Manitoba
2007-2008	Michael Spratt	Sask.
2008-2012	Stuart Byman	Sask.
2012-2016	Scott McCormack	Sask.

PAST GENERAL MANAGERS

1980-1985	Brian Kitchen
1985	Herb McLane
unknown	Rod McLeod



PRESIDENT'S REPORT

Greetings,

I hope that summer has found you without too many challenges and that haying is wrapped up with your feed stocks replenished. We have seen a very busy year this year as a Board of Directors and are extremely excited about all the projects we have accomplished or are moving forward with.

First off, after more than 3 years of waiting for programming and rebuilding, we finally have our on-line registry in place. This is such an important tool to us as an association and to you, the membership. While we are still tweaking the program, the ability to register cattle outside of office hours, gives us a tremendous amount of flexibility. We are pretty happy with the product and hope that it brings as much value to the membership as we had hoped it would. With that being said, if you have any questions or concerns about the system please let us know. We cannot service you properly if we don't receive feedback.

Secondly, we have had some big changes with our magazine "the Maine Mail". Carolyn McCormack has resigned as our creator and editor-in-chief of what has become a flagship of pride for most of us. Carolyn's amazing design and unwavering commitment to 15 issues of this magazine since March 2009 will be greatly missed. Her countless hours of work and sleepless nights (as I have witnessed) to meet deadlines, have not gone unnoticed by our board but encourage you, if given the opportunity to let her know what a great job she has done taking this project to the next level it is today. We are pleased to announce that Heidi has been contracted to design and build the next editions of the Maine Mail and are filled with anticipation of what the future holds for the magazine. Be sure to contact Heidi as the deadline dates have changed on the upcoming issues.

One of the most anticipated projects that I am most proud of is the addition of a full EPD evaluation. In my mind this has been 20 years in the making and secures our position with all of the major breeds in marketing our animals with a set of North American Breed EPD's. We currently are generating our EPD's through the partnership of the American Maine-Anjou Association (AMAA) and the American Simmental Association (ASA). We have one data dump annually, which allows us to have updated and interim EPD's to use for marketing our animals and a tool for breeding and management decisions. This has not been an easy project as there are many levels that the information has to travel through along with some complex and time-consuming herd book issues to sort out. Along with our on-line system and our data search on the website, with the touch of a button you can search pedigrees and see the breed EPD's listed on almost all animals in the system. The CMAA Board of Directors also offered another amnesty program that was met with a huge amount of success as we had over 400 head of Maine cattle added to our registry. I want to personally thank each and everyone for your faith, dedication and commitment to this amazing breed of cattle; without each of you we would not be able to work on your behalf – to add programs and build a budget with more dollars allotted to advertising that we previously just did not have.

Our Junior program is still being re-tooled but I have had some productive conversations with the Alberta Junior Maine-Anjou Association (AJMAA) about our vision and about developing a stronger relationship with youth in the breed and in other breeds. We are currently canvassing Canada for young people who we can invest in and partner with to run our National Junior Executive. Please contact the CMAA office or a director if it is something that interests you.

I see a huge surge in demand for the product that you are putting out. Many of you have been diligent at breeding Maine-Anjou cattle that work for commercial cattlemen as well as having the ability to continue our dominance in the show cattle industry. Kelly Smith-Fraser has done an incredible job sourcing some excellent promotional items for your association. I cannot wait to see our swag out there in the industry again. As the fall show season closes in on us, I wish you all the best of luck exhibiting cattle in this great breed across the country.

Remember... "your success, is our success".

Mainely yours,
Scott McCormack
CMAA President



Custom &
Responsive Websites



Email Campaigns



Logos & Branding



Mobile Apps



Business Cards, Flyers &
Publication Advertisements



OFFICE MANAGER'S REPORT

Dear members,
Thank you for your support and patience in the last few month. Business in the office is going well. I feel I'm very fortunate to have the Hereford ladies working in the same building. Whenever I need to clear my head or need some advise, the ladies are ready to help.

Many things have been accomplished over the last few month and there is still more to come for the Canadian Maine-Anjou Association and the Salers Association of Canada.

MAINE-ANJOU WORLD CONFERENCE

At our last Board meeting, a director brought up the great idea to possibly host a World Maine-Anjou Conference in Canada in 2020.

2020 will mark the 50th anniversary of the Canadian Maine-Anjou Association. The first Maine-Anjou imported from France into North America came to Canada in 1969. These cattle were then introduced to the United States through artificial insemination.

At this point in time we would like to get some feedback from our members on what their thought are on this possible event. Please contact the office in writing with your ideas, comments and suggestions.

The amnesty program offered to our members generated many additional registrations. Thanks to you, our members for making this catch up program very successful. Registrations compared to last year doubled in numbers.

EPD's can now be looked up online from our website and are printed on the registration papers as well. Please remember to send me accurate birth weights, weaning weights and yearling weights. The more data we have on hand the more valuable our EPD's will be.

Online Registry: This feature is set up as well and ready to use for all our members. In order to log in you need to request a password from the office. After you have entered your registrations, I will print them in the office, charge your credit card and mail your papers to you.

Biobank move from Quantum to Delta Genomics: This project is not completed yet, it might take another while until all our DNA will be stored in Edmonton. DNA results are still delayed.

Out of the Office: The two associations kept me very busy over the last year. I will be away in October but will add additional days in the office prior to my departure and after my return as needed. Sorry for any inconvenience!

Questions for our members:

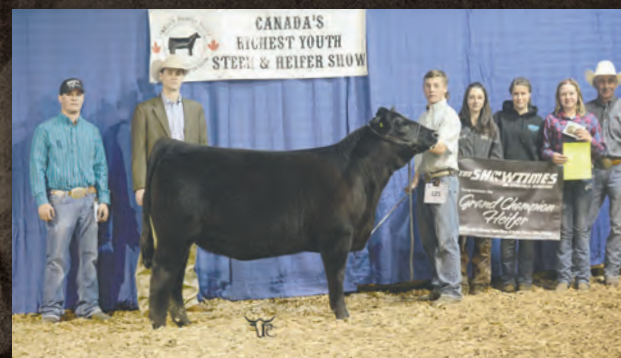
- * Would you support the Board of Directors and the organization committee to make this event a success?
- * What location do you think would be most suitable?
- * What kind of events would you like to see organized?
- * What time of the year would be most suitable?
- * How should we finance this event?
- * Would you be interested in volunteering for any events held in conjunction with the conference?



MISS RUSYLVIA CALLA,
NOW NAMED CHAMPION MAINE
AT SUMMER SYNERGY
Full sister to Benelli



PASTURE TOURS WELCOME



CHAMPION MAINE AND GRAND CHAMPION HEIFER
2016 CRY Show



CHAMPION MAINE AND GRAND CHAMPION HEIFER
2016 Making Champions Clinic & Show

A VERY STRONG SET OF 2016 CALVES BY
BENELLI MAB MONOPOLY
WALK THIS WAY BODIACIOUS
BELIEVE IN ME ITALIAN STALLION
I DELIVER UNSTOPPABLE
GVC SUH WALKS ON WATER
READY 2RUMBLE FU MAN CHU

A WINNING TRADITION

8 CHAMPIONS out of
the 12 head sold in last year's sale

Mark your calendars for
RUSYLVIA CATTLE CO. ROUND TWO

D|L|M|S
www.dlms.ca

OCT 8
Open House

OCT 9 @7PM
Sale close out

SALE ONLINE
with
DLMS.CA



www.rusylviacattleco.com

KEN, JOSIE, TYSON, RILEY, & TAYLOR PASHULKA
Derwent, Alberta, Canada 780.741.2188
Ken's Cell Tyson's Cell Riley's Cell
780.787.0237 780.581.3870 780.581.3013

kenpashulka@hotmail.com



CMAA ANNUAL MEETING

The 2016 Canadian Maine Anjou Associations AGM was held in Wetaskiwin, AB from August 5-7. Members from Ontario, Manitoba, Saskatchewan and Alberta were in attendance.

The weekend kicked off with members gathering for an evening of socializing while the board of directors held their evening board meeting.

Scott McCormack and Brian Brown officially greeted all members of the CMAA to the AGM on Saturday morning. A productive day of meetings was held and we were very fortunate to have Blake Nelson from the AMAA speak on the importance of genomics in the Maine Anjou breed as well as a summary of the various projects the AMAA is

currently working on. We welcomed newest CMAA director, Bryan Zimmer to the board.

A delicious beef supper capped off the days events with some great fun and laughs to round out the evening. On Sunday we were welcomed to the home of Rapid Creek Ranch (Brian & Sharon Brown) for a delicious breakfast and tour of sale cattle.

Thank you to the Alberta Maine-Anjou Association and Brian & Sharon Brown for hosting the AGM and to all that helped plan and sponsor the weekends events & silent auction. It was a great weekend and we are all looking forward to next years AGM in Ontario.



2016 - 2017 Board of Directors

Back: Clayton Elliot, Scott McCormack (President), Myles Hansen, Kody Roddick, Sid Wilkinson (Second Vice-President)
Front: Brian Brown (Treasurer), Kelly Smith - Fraser (First Vice-President), Tracy Wood (Secretary) Bryan Zimmer

AGM photos...



1. Members from across Canada - Dave Perry, Sid Wilkinson, Doug Kerr, Keith and Theo Gilbert
2. Blake Nelson, Kelly Smith - Fraser, Gary Graham
3. Board of Directors ready for the meeting
4. Brian Brown organizing fun activities
5. Keith Gilbert reciting
6. Delicious breakfast at Brian & Sharon Brown's
7. Rapid Creek Cattle



SILENT AUCTION

ITEMS SPONSORED BY:

Bandanas - AMAA
 Belt Buckle - AMAA
 Wine Glasses - AMAA
 Record Books - AMAA
 World Maine- Anjou Spoon & Cap - AMAA
 Perfect Bacon Bowl - Wildberry, Rentons
 Cutting Board and Apron - Nuhaven
 Bathroom Set - Nuhaven
 Bracelets - Stenbergs
 Cow Outhouse - Stenbergs
 You might be a red neck game - Wildberry, Renton
 Fencing Pouch & Tools - Brown
 Wine Chiller - Brown
 Crown Royal - Stenbergs
 BBQ Sauce and spatula - Deanna Wise
 5 units Pk Polled Perfection 131C - Alan Martinell
 5 units Dollar Z - Alan Martinell
 Print - Sid Wilkinson
 Cap & Jacket - Section 19 Cattle Co.

WINNING BIDDER:

Kyle Smith
 Dave Perry
 Jean Renton
 Keith Gilbert
 Miles Hansen
 Deanna Wise
 Sid Wilkinson
 Kody Roddick
 Sid Wilkinson
 Jean Renton
 Doug Kerr
 Doug Kerr
 Gary Graham
 Gary Graham
 Gary Graham
 Gary Graham
 Keith Gilbert
 Myles Hansen





ASSOCIATION NEWS

ALBERTA ASSOCIATION NEWS

By Kevin Shuckburgh

Thank you to everyone who took time out of their busy summer schedules to attend the Canadian AGM in Wetaskiwin. On behalf of the Alberta board and membership, I would like to say thank you to Brian and Sharon Brown and Bob and Janice Stenberg for organizing this event. They are true Ambassadors of our breed.

The Alberta AGM was held July 23rd in conjunction with Westerner Days. We welcome new director Brett Hansen as well as returning directors, Melanie Barkley, Keltey Whelan, Doug Roxburg, Ken Pashulka and Robert Stenberg.

Alberta Executive positions were filled as follows:

Kevin Shuckburgh - President

Craig Cameron - Vice President

Secretary - Keltey Whelan

Treasurer - Melanie Barkley

As well as committee positions:

Website: Keltey Whelan

4-H: Della Whelan

Calendar: Bryan Zimmer/ Miriam Cameron

Della Whelan reported strong numbers again for 4-H. To date we have sent out awards to 91 members in 31 clubs totalling 112 projects. It is one of our main priorities as a board to ensure these members receive recognition of their Maine Anjou projects. A huge thanks again to Della for all of the time and effort she puts in to ensure the kids are taken care of.

Both The Alberta Junior Maine Anjou and Summer Synergy shows were attended. The number of junior exhibitors and quality of cattle continue to grow. Thanks again to Della Whelan and Keltey Whelan for their efforts at Synergy as well as Lee-Anne Zimmer, Christie Griener, and Lindsey Douglas for their contributions to the Alberta Junior Maine Anjou Show. Last but not least, a huge thanks to all of the sponsors.

As fall quickly approaches it's time to start thinking about getting your page or business card in for the 2017 calendar. If you are planning on being a part of our calendar, get your information in before September 1st as we would like to have the calendars printed in time for distribution at Farmfair. Farmfair will be held November 9th to 13th this year. It would be great to see numbers like we had last year, and I encourage you all to attend.

SASKATCHEWAN ASSOCIATION NEWS

By Caroline McCormack

The Saskatchewan Maine-Anjou Association has begun planning for our major Fall Show at Agribition. The show is scheduled for Wednesday, Nov. 23. Please note the new day for the Maine-Anjou show - Canadian Western Agribition had begun rebuilding and replacing some of the old buildings on the Regina Exhibition grounds and with that will be some scheduling changes. Please come out and support the only Maine show in the province. If you have any questions regarding the show, please contact show chairman Scott McCormack 306.697.2945.

Last call for 4-H Prize Winners! The SMAA will award a special prize to Champion or Reserve Steers, Heifers and Cow/calf provided the animal is 50% or Maine-Anjou and shows breed characteristics. Please send qualifiers information (name, phone, award and a photo) to the temporary SMAA office - sasksimmental@yourlink.ca. In the event of more than one qualifying award, only one prize will be awarded.

The Sask. Maine-Anjou Association is planning a meeting in the near future to rebuild the Board of Directors. If you are interested in helping to revive the SMAA, please contact Scott McCormack to be part of the future!




DEAGLE
CATTLE COMPANY LTD
 Providing the "MAINE" Difference in the Cattle Industry
www.deaglecattleco.com



5th Annual Bull Sale April 1, 2017
 Dryland Cattle Trading Corp.
 Veteran, AB
 2 Year Old Maine and Maintainer Bulls
 Open Palpated Maine Influence Breeding Heifers

Rick and Marilynn
 (403) 577-3078
 Rick Cell: (403) 575-5521

Trevor and Danica
 Trevor Cell: (403) 575-5237
 Email: tdeagle@live.ca

 Check us out
 on Facebook

MANITOBA ASSOCIATION NEWS

By Tracy Wood

The Manitoba Maine Anjou Association held their Annual meeting in February this year. Our President is Sid Wilkinson, Secretary Doug Kerr and Treasurer Tracy Wood.

Sale of Maine Anjou breeding stock was strong within the province. Wilkinridge Stock Farm held its Annual Female Production Sale in December and its Bull sale in April along with a selection of both bulls and heifers being sold at Douglas Bull Test Station.

The Maine-Anjou breed was represented well across Manitoba 4-H Beef clubs with 14 tokens being handed out.



DOUGLAS BULL TEST STATION REPORT

By Douglas Kerr

The Douglas Bull Test started 2015-2016 season with 149 bulls from 7 breeds along with 25 heifers. 6 bulls and 5 heifers were Maine-Anjou, all consigned by Badger Hill Maine-Anjou. At the end of test 144 bulls had an average daily gain of 3.77lb per day and a weight per day of age of 3.49lbs. The average daily gain for the Maines was 3.65 and weights per day of age 3.47.

End of test sale was April 2nd 2016. Two Maine-Anjou bulls and 5 Maine heifer were in the sale. One bull tag #605 sold to Jennie & Harry Smith, Saltesota, SK for \$3000. Four heifers also sold to Jennie & Harry Smith. Two heifers sold to Gary Graham, Marsden, SK and one heifer sold to Sid Wilkinson, Ridgeville, MB.

This year we had the second annual Douglas Summer Bull-Female Sale on May 31st. The quality of the animals on offer was very good, but buyer support not. There was 16 bulls and 1 heifer consigned for the sale. At sales end two bulls and one heifer had sold. Gilcroft Farms purchased Badger Hill Mr 202C for \$3200. One Angus bull and the Shorthorn heifer also sold.

The future of this sale does not look good. We will decide whether to continue with the summer sale at the next board meeting in August.

There are more changes at the station. As of April 30 Yvan Antholz has retired and a young man by the name of Tyler Winters has been hired as new manager. We wish Yvan the best in a well deserved and lengthy retirement.

For the upcoming test season calves will be delivered the week of October 11-15. Start of test is November 7th.

Test schedule:

56 day weights	January 3rd
84 day weights	January 31st
End of test	February 27-28
Sale day	April 1st, 2017

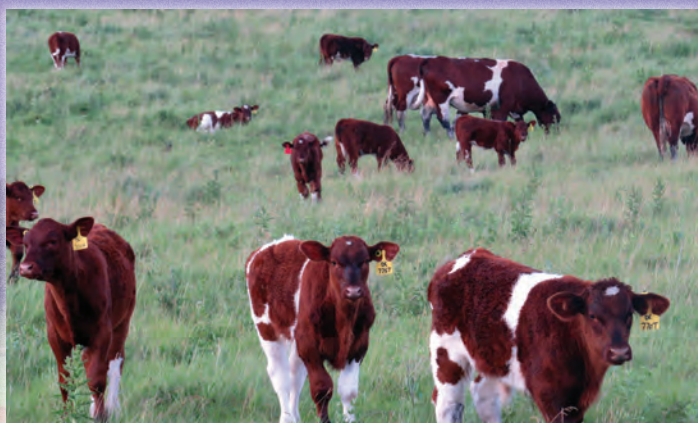
The Douglas Test Station also custom feeds cattle of all classes, space permitting.

For more information contact Tyler Winters at 204-851-1165 or office manager Bev Walker at 204-763-4696.
Fax: 204-763-4102
Email: bulltest@mynetset.ca
Website: www.manitobabulltest.com.

The Douglas Test Station is located 17 miles east of Brandon on highway #1 and 1/2 mile south on #357.

Visitors always welcome!

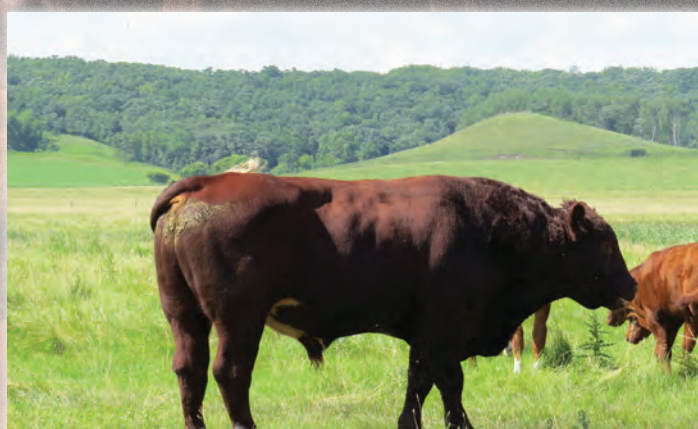
Badgerhill Maine-Anjou



Fullblood Cows and Calves on Pasture



BHMA 150C at 13 months scrotal circumference 39cm D.B. April 23,2015. Performance numbers at Douglas. Were the best of the Maine-Anjou bulls this year. ADG 4.25 W/D/A 3.69
Sire GG 54X Dam FAL 150N



DHK 18Z Polled FB Bull



BHMA 4C Polled FB Heifer Sire DHK 18Z Dam AEHW 10A



BHMA 14C Polled FB Heifer Sire GG 54X Dam JKR 317Z



BHMA 30C FB Heifer Sire GG 54X Dam FAL 332N

Thank you to our buyers who purchased Badger Hill cattle at Douglas Test Station this year.
Jenny and Harry Smith, Gary Graham, Sid Wilkinson and Keith Gilbert.

Congratulations to the Canadian Maine-Anjou Association on getting EPD's in place.

Doug and Geri Kerr, Box 12, Ninette, MB R0K 1R0
Ph: 204.528.3293 Doug's cell: 204.729.6506 Email: gerikerr@mymts.net



BIXS TODAY

By Deborah Wilson, Sr. Vice president of BIXSco Inc.

BIXS(Beef InfoXchange System) was founded in 2008 to support the Canadian Beef Advantage branding initiative. It was free, voluntary and confidential for cow-calf producers, feedlots and packers, processors and distributors to share relevant production, performance, health, genetic, and carcass data funded by government.

BIXSco Inc. was formed in early 2015 and took over management of the BIXS data system, working toward developing a business model for information sharing across the beef value chains. The following model is developing - whoever enters information into BIXS owns it and whoever wants the information pays for it, with BIXSco charging modest transaction fees to keep the system afloat.

In the past Packers were paid for carcass data, provided by government funding. This enabled producers to receive this information back at no charge simply by enrolling on BIXS, and age verifying their cattle. The flow of carcass data ended when the grant funding expired Jan. 1, 2013.

The McDonald's verified sustainable beef pilot project utilized BIXS to track the chain of custody from cow-calf producers, to the feedlots, to the Cargill and JBS plants in Alberta. They supply trim to the patty plant at Spruce Grove, which supplies all of the patties for McDonald's burgers in Canada.

Cargill and JBS willingly shared chain of custody information free of charge and BIXS demonstrated that the web-based system can effectively track chain of custody.

"Eight million pounds of hot-carcass weight were represented in the project data with 300,000 pounds of it going into the McDonald's system to account for approximately 2.4 million burgers from a fully verified sustainable supply chain".

BIXSco now has a signed agreement with Cargill for carcass data from its plants at High River, Alta. and Guelph, Ont., from the start of 2013 onward and is holding that information in trust to protect Cargill's privacy until at least one other packers is on board. Negotiations for carcass data from JBS at Brooks, Alta., are underway and meetings are being held with Harmony Beef, the plant just north of Calgary.

BIXS is a neutral third-party to facilitate information sharing, identified by the Canadian Roundtable on Sustainable Beef as a pillar of sustainability. BIXS can be used to verify chain of custody, track records for branded programs and feature programs that producers follow on the farm, such as VBP+, the feedlot animal care program, as well as general management practices, genetic and production records.

This is our opportunity for Canada's beef industry as we have the tools to validate what we do. Canada Beef has done a great job creating the global brand for Canadian beef, now we just need to verify the practices backing the brand with BIXS.

Visit the new BIXS website: www.bixsco.com or the BIXS TV channel on YouTube.



BACK TO

OCT 2016 8TH

CLASS

Rawluk Livestock - Horner Cattle Co.
LOCATED AT HORNER CATTLE CO. - MINNEDOSA, MB
PROSPECT STEER & HEIFER SALE

ITS ALL ABOUT

the Journey

*with good friends
and great
expectations!*



Thank You

to our 2015 customers. We look forward to working with you again this year!



Jake Rawluk
204-768-0284
Allen Rawluk
204-768-0313
rawlukj@gmail.com



COMMERCIAL AND SHOW CATTLE

Laura Horner 204-868-5335
hornercattlecompany@gmail.com

Look for pictures and updates of 2016 Back to Class Sale calves on Facebook and DLMS!



UNDERSTANDING AND USING EPDS

*By Dr. Bob Weaver, Associate Professor,
Kansas State University*

Selection of beef cattle for seedstock or commercial beef production can be very challenging. In addition to the conformational qualities of an animal, producers are interested in a variety of performance attributes including calving ease, growth rate to desired end points and carcass merit. Over time a variety of selection tools have evolved that utilize performance records collected by seedstock producers. These performance measurements are standardized following the guidelines of the Beef Improvement Federation and adjusted for known sources of non-genetic variation including calf gender, age of calf a measurement and the age of dam when the calf is born and reared. The adjusted performance records are compared within contemporary group to compute Expected Progeny Differences (EPD).

A contemporary group is a group of animals that have been fed and managed together and given same opportunity to perform. Since the phenotype or performance an animal is controlled by both genetics and management, if we control environment and define groups of animals that experience that management via contemporary grouping, then the differences we observe within group are then assumed to be of genetic origin. The contemporary group forms the basis of genetic comparisons in the computation of EPDs.

EPDs are computed as part of the International Genetic Solutions Multi-Breed International Cattle Evaluation (MB-ICE) program. The MB-ICE program represents the application of the most recent genetic and computing technology for calculating EPDs for beef cattle. The MB-ICE program incorporates all available performance into the prediction

of an individual's EPD for a specific trait. An EPD may be based on any combination of individual performance, pedigree and progeny performance information. In addition, EPDs are more accurate than anything previously available because they account for the following factors:

- Genetic value of cows to which a bull is bred.
- Environmental differences affecting contemporary groups.
- Genetic values of other parents in the contemporary group.
- Genetic trend.

EPDs are reported in pounds for birth weight, weaning weight, maternal milk, maternal milk & growth and yearling weight. Calving Ease and Maternal Calving Ease are reported in percent unassisted births from first calving heifers.

Expected Progeny Differences (EPDs) estimate how future progeny of the subject animal will compare on average to progeny of other animals evaluated in the same evaluation system. EPDs are not designed to predict the performance of one or two progeny of a sire, but rather should be used to compare bulls based on estimated progeny performance. EPDs predict differences, not absolutes. They describe the relative genetic value of an animal much like a feed tag describes the contents of a feed sack. The EPDs reported online, on performance pedigrees and in sire summaries provide a relative comparison between any two animals. EPD do not predict individual animal phenotypic performance. Remember, your management contributes to the phenotypic expression of genetic potential. Your management is unique and different than other producers and accounted for in analysis within contemporary group. The EPD describes additive genetic potential, or that genetic variation between animals that is transmissible from parent to offspring.

Consider two bulls, Bull A with a Weaning Weight (WW) EPD of 47 and Bull B with a WW EPD of 70. The difference in weaning weight genetic potential for these two bulls is 23 lb (i.e. the differences in the EPD). The interpretation of this difference is that if we mated each bull, say via AI, to 100 cows of similar age and genetic potential, we'd expect average of Bull B's calves to be 23 lb. heavier than Bull A's. Notice we didn't predict the actual phenotypic means or averages, just the difference. Expected Progeny Differences are computed relative to a reference point or genetic base. Note that zero '0' is not breed or active sire group average. In the MB-ICE system the common base is somewhat arbitrary. Users should compare animals against each other or use percentile rank table to determine relative merit across the American and Canadian Maine Anjou population.

Gilcroft Farms Fall Sale

Saturday, December 3, 2016 1 P.M.

**Hoards Station Sale barn, Campbellford, ON
Offering Fullblood and Purebred Bulls & Replacement Females**

WITH GUEST CONSIGNERS:

**Cornerstone Farm
Truray Maines
Tee Jay's Maine Anjou**

**Jim & Sonya Whitaker
Gordon & Trudy Ray
Timothy McKee**

**705-374-4604
705-652-7833
519-321-9468**

**Ontario's Number One Source of Full-blood
and Red & White Purebred Maine Anjou**

**Online bidding provided by DLMS.ca
Trucking & border crossing assistance**

**Catalogue available
EPD's on all Gilcroft cattle**

GILCROFT FARMS

www.DLMS.ca

Keith, Theo and Ron Gilbert

P: 613-393-5336 C: 613-813-4399

E: gilcroftmaines@hotmail.com

ELMVIEW MAINE-ANJOU

Focusing on Breeding Fullbloods & high quality Purebreds



EVMA 19X Elmview X-Caliber

Son of GG 79J & VVS 18K

Born May 11/10

Photo captured July 2014



EVMA 16B Elmview "Bossy Bert"

Son of EVMA 19X & FAL 240Y

Born April 19/14

Photos captured July 2014



TJMA 6B

Daughter of EVMA 19X & TJMA 9Y

Born February 27/14

Photo captured July 2014



EVMA 53D Heifer

Daughter EVMA 19X & FAL 914Y

Born July 11, 2016

Photo captured July 2016



EVMA 46D Bull

Son of EVMA 19X & FAL 240Y

Born July 4/16

Photos captured July 2016



For more information contact Harold & Lynda McKee

9539 Concession 13 Minto, Ayton Road, RR#4, Harriston, ON N0G 1Z0

Phone 519.338.3930 - 519.313.1404 - mckeehw@gmail.com

BUCKWHEAT ACRES INC.

Featuring Tee Jay's Fullblood Maine-Anjou

TJMA 48B

Daughter of GG 30S & TJMA 9W
Born June 4/14
Photos captured June 2016



TJMA 9W

Daughter of GG 79J & TJMA 1N
Born March 8/09
Photo captured June 2016



TJMA 20D

Son of JKR 10A & TJMA 9W
Born May 1/07
Photo captured June 2016



TJMA 6B

Daughter of GG 29T & TJMA 9Y
Born February 27/14
Photo captured June 2016



TJMA 9Y

Daughter of GG 79J & TJMA 16T
Born April 14/11
Photo captured June 2016



TJMA 16T

Daughter of GG 79J & TJMA 1L
Born May 1/07
Photo captured June 2016



TJMA 1N

Daughter of WSJ 14K & VVS 19K
Born January 21/03 *Third Breeding*
Photo captured June 2016, cow was open in 2016



TJMA 14D

Son of JKR 10A & TJMA 16T
Born March 27/16
Photo captured June 2016



For more information contact Timothy James McKee

9539 Concession 13 Minto, Ayton Road, RR#4, Harriston, ON N0G 1Z0

Phone 519 321 9468 - buckwheat040484@hotmail.com

The Canadian and American Maine Anjou Association both report EPD on the IGS multi-breed common base in use by several breeds collaborating in the MB-ICE evaluation. The collaborative evaluation undertaken by IGS brings a number of advantages to commercial cow-calf producers and other participants in the beef value chain. The IGS system now includes over 15 million animals and 35,000 genotypes making it the largest and most powerful beef cattle genetic evaluation in the world. The IGS system provides EPDs for the American and Canadian Simmental Associations, American and Canadian Gelbvieh Associations, Canadian and American Maine Anjou Association, American Chianina Association, American Shorthorn Association, Canadian Angus Association, and the Red Angus Association of America.

The IGS system computes multi-breed EPDs for a full range of EPD traits including EPDs for Calving Ease, Maternal Calving Ease, Birth Weight, Weaning Weight, Yearling Weight, Milk, Carcass Weight, Yield Grade, Marbling, Rib-eye Area and Fat Thickness. The system accounts for both direct and maternal heterosis effects as well as breed effects. After performance records are adjusted for these effects, breed composition is eliminated from the contemporary group definition. This realignment of contemporary groups into larger groups contributes to higher accuracy EPDs for animals in these groups. The inclusion of a large amount of Angus and Red Angus genetics represented in many of the cooperating breed databases effectively ties all the data sets together.

EPD values are accompanied by accuracies. An EPD accuracy is a measure of certainty regarding the genetic merit of an animal. Accuracy values are calculated for each EPD according to Beef Improvement Federation (BIF) Guidelines and reported as a decimal number between zero and one. Larger values indicate greater accuracy. Typically a non-parent animal (one with no progeny records in the database) have accuracies around 0.2-0.3 for traits of moderate heritability, like birth, weaning or yearling weight, and have a valid performance record made in a contemporary group. Pedigree estimate EPDs (the average of sire and dam EPD) is assigned 0.05. As a sire or dam accumulates progeny and grand progeny with performance records accuracy of the prediction increases. Animals with low accuracies are subject to large expected movements in the prediction as data is accumulated versus animals with high accuracies (>0.70).

Each EPD is associated with a specific trait and has an associated unit of measurement. Trait definitions for EPDs reported for CMAA are listed below.

Trait Definitions:

Calving Ease - Calving ease EPD describes the heritable

component of a sire's ability to produce calves with minimal dystocia or calving difficulty when mated to heifers. It is the best selection tool to use to reduce dystocia. A sire with a 10 CE EPD is expected to 6% more unassisted births than a sire with a 4 CE EPD. Units are in percentage of additional unassisted births.

Birth Weight - Progeny can be expected to weigh 1.7 lb. more at birth than progeny sired by a bull with an EPD of 1.1 lb. ($2.8 \text{ minus } 1.1 = 1.7 \text{ lb.}$) Birth weight is an indicator of calving ease. Larger birth weight EPDs usually indicate more calving difficulty.

Weaning Weight - Weaning EPD reflects pre-weaning growth. Calves sired by the above bull should have a 16 lb. advantage in 205-day adjusted weaning weight compared to calves sired by a bull with an EPD of 28 lb. ($44 \text{ minus } 28 = 16 \text{ lb.}$)

Yearling Weight - Yearling EPD for this sire indicates his progeny should be 16 lb. above the average of progeny of a bull with an EPD of 77 lb. Yearling EPD reflects differences in the 365-day adjusted yearling weight for progeny. It is the best estimate of total growth.

Milk - The milking ability of a sire's daughters expressed in pounds of calf weaned. It predicts the difference in average weaning weight of sires' daughters' progeny due to milking ability. Daughters of the sire in the above example should produce progeny with 205-day weights averaging 2.1 lb. more (as a result of greater milk production) than daughters of a bull with a maternal milk EPD of 4 lb. ($19 \text{ minus } 15 = 4 \text{ lb.}$). This difference in weaning weight is due to total milk production over the entire lactation.

Total Maternal - Total Maternal reflects what the sire is expected to transmit to his daughters for a combination of growth genetics through weaning and genetics for milking ability. It is an estimate of daughters' progeny weaning weight. The bull in the above example should sire daughters with progeny weaning weights averaging 8 lb. heavier than progeny of a bull's daughters with a Total Maternal EPD of 34 lb. ($42 \text{ minus } 34 = 8 \text{ lb.}$). It is equal to one-half the sire's weaning weight EPD, plus all of his milk EPD. No accuracy is associated with this since it is simply a mathematical combination of two other EPDs. This EPD is sometimes referred to as "Maternal Milk & Growth" or "combined maternal."

Maternal Calving Ease - Maternal Calving Ease provides an indicator of the ability of a sire's daughters to calve unassisted. Units of measure are additional percentage of unassisted births. A sire with MCE EPD of 6 is expected to sire daughters that 4% more unassisted births than a bull

· FIRST ANNUAL ·



prospect steer & heifer sale

We would like to thank all our
customers, past and present,
and look forward to seeing you
this fall!

saturday, sept 24

Live auction on the farm, and
online bidding provided by DLMS www.dlms.ca

with friends:

NU HAVEN
cattle co

Kelly & Scott Fraser 403.598.4323
Kristine Smith 403.227.2523

HIGH COUNTRY
CATTLE SERVICES
Rob & Deanne Young 780.696.3643



hosted by:

Hiller Hay Farms

Calmar, Alberta

Elaine Hiller 780.991.8106

Doug Hiller 780.991.8136

Wyatt Hiller 780.991.8966

Jordie Buba 780.818.4047

D/L/M/S
www.dlms.ca



Follow us on
Facebook for
sale updates

Carcass Weight - Carcass Weight EPD reflects differences in the 450-day adjusted hot carcass weight (pounds) of progeny. Carcass Weight EPD for this sire indicates his progeny should be 12.0 lb. above the average of progeny of a bull with an EPD of 0.0 lb.

Fat Thickness - Fat Thickness EPD reflects expected differences in a sire's progeny for the carcass measurement of inches of 12th rib fat thickness. A negative Fat Thickness EPD reflects the expectation of progeny having less fat thickness (leaner carcass). Fat thickness is one of the components used to determine USDA Yield Grade and estimates of cutability.

Rib-eye Area - Rib-eye Area EPD reflects expected differences in a sire's progeny for the carcass measurement of square inches of rib-eye area taken between the 12th and 13th ribs. Rib eye area is one of the components used to determine USDA Yield Grade and estimates of cutability. Positive Rib-eye Area EPDs are reflective larger average progeny rib-eye area.

Marbling - Marbling EPD reflects differences in expected progeny marbling scores (intramuscular fat). Marbling EPD is measured in marbling score units. For example the progeny of a sire that has a Marbling EPD of 0.50 would be expected to average one-half marbling score better than progeny of a sire with Marbling EPD 0.00.

Percentile Breakdown of EPDs

Percentile charts for the breed's active Maine-Anjou and MaineTainer sires (those producing a calf with a performance record since 2013) are available on line. These can be used to get a better idea of how a bull ranks in the current group of active sires in the Maine-Anjou or Main-Tainer breed groups. The chart is divided into 5 percent increments for each trait. The top 5 percent are further divided into 1 percent increments.

Very few bulls rank at the top in every trait, but through careful evaluation you should be able to find bulls to match your specifications. To see how the table may be used, let's look at our example bull used previously.

Genetic Trend

The genetic trends in the Maine-Anjou and MaineTainer breed groups describe the average EPD of CMAA/AMAA animals born each year. All animals in the analysis were used to generate this information. This includes Fullblood and Purebred animals as well as lower percentage Maine-Anjou cattle. In general, the EPD changes from one year to the next are quite small. This does not mean the performance of the cattle has not changed over the years. The actual weights taken on animals are phenotypic measurements. Phenotypic changes can be made through changing not only an animal's genetics, but also by changing an animal's environment.



Wilkinridge Stock Farm

Mark your calendar!

Fall Female Sale



NEW HERD SIRES
RDRL240B & Rusylvia 5B

December 10, 2016



View Catalogue online:
www.wilkinridge.blogspot.com

SID WILKINSON

(204) 373-2631 ph • 324-4302 cell





**FARMFAIR
INTERNATIONAL**
NOV. 9-13, 2016

**PROUD OF
WHAT WE DO.**

farmfairinternational.com
#FARMFAIR
Edmonton EXPO Centre



Cattle Entries Now Open

Ranchers, farmers and producers from around the world come to Farmfair International to meet, do business and drive innovation. It's where the top stock competes, the best deals are made, the sales are supreme and the future of agriculture all comes together.

Legends of the Fall – November 9

Maine Anjou Show – November 9

Prospect Steer & Heifer Show – November 11

Bull Pen Show – November 12

DCP 381D
Grand Champion Male
All Breeds
Odessa Fair 2016



Both Animals sired by I-80

DCP 38D
Grand Champion Female
All Breeds
Odessa Fair 2016



We have bull calves and embryo's sired by I-80, Maine-Man, Daddy's Money and I Deliver! Please contact us for inquiries!

Dave, Kim, Justin, Kaitlyn, Grant & Mason Perry, Harrowsmith, ON
Phone: 613-453-2071 ~ Facebook: Perry Farm or Dave Perry ~ Email: localfamilyfarms@bellnet.ca

NOVEMBER

21-26, 2016

MAINE-ANJOU SHOW

WEDNESDAY, NOVEMBER 23, 2016

CANADIAN WESTERN

Agribition

Evraz Place • Regina, SK



2015
Grand Champion
Maine-Anjou
Bull



2015
Grand Champion
Percentage
Maine-Anjou
Female



2015
Grand Champion
Maine-Anjou
Female



2015
Grand Champion
Interbreed Female
Junior Beef Extreme

ENTRY DEADLINE OCTOBER 1

Purebred Beef, First Lady Classic, Presidents Classic,
Junior Beef Extreme, Bull Pen Alley
online entry - www.agribition.com

Purebred, Fullblood and Mainetainer

SYNERGY SUCCESS

By Della Wise-Whelan



Rain Doesn't Dampen Spirits at Summer Synergy

Daily severe weather warnings and torrential rain may have made for wet conditions, but it didn't interfere with the activities of 357 youth from British Columbia to Ontario when they descended upon Olds, Alberta, to participate in

the 2016 edition of Summer Synergy. Four days of competitions culminated in the awarding of 55 scholarships through the Calgary Stampede International Youth Livestock program. These youth were recognized on stage during the Saturday evening Grandstand show. The Evening of Excellence celebration shares \$4,750 in skills scholarships, and a total of \$74,750 in scholarships were presented this year.

Summer Synergy hosted the Provincial 4-H beef, sheep and dairy shows, a jackpot beef heifer show, the Canadian Charolais Youth Association conference and show, as well as six breed-sponsored conformation shows with both purebred and commercial divisions. The youth competed in marketing, showmanship, grooming, show team judging, photography and multi-species judging. This year 251 juniors tested their skills in the collegiate style, 10 class multi-species competition, an unprecedented number.

Breeders can be very proud of the animals exhibited in the Maine-Anjou shows. The commercial ring was adjudicated by Quest Newberry of George West, Texas. When the MaineTainer division champions paraded before him for the final slap, it represented an excellent offering presented by the junior exhibitors. Justin Couch of Sundre, AB, captured the Grand Champion MaineTainer Female banner with his mature cow, Alia Donor. The four-year-old had topped her division of outstanding females, with judge Newberry giving the advantage to her bull calf, Sun's Out Guns Out. The Fu Man Chu son was also named Champion Bull Calf. A yearling Comfort Zone daughter, C-Zee, owned by Bailey Wauters of Wrentham, AB, was named Reserve Champion MaineTainer Female.

The dynamic heifer bested a very tough class of yearlings to win the division. The Champion Two-Year-Old Cow, Sweet Temptation, made her second appearance at Summer Synergy. The Walkie Talkie daughter, exhibited by Ashley Schmidt of Falun, AB, was the 2015 Grand Champion MaineTainer Female. Riley Pashulka of Derwent, AB, got the judge's nod with his Mr. Rusylvia Bennelli daughter as Champion Heifer Calf, Dazzle Me, stood at side with her dam, Miss Rusylvia Ain't She Pretty RLP15A, in the mature class.

Jake Scott of Gordon, Nebraska, spent his day judging in the purebred ring. He chose Miss Rusylvia Calla 47C as Champion Purebred Yearling, and also awarded her the Purebred Grand championship. Taylor Pashulka of Derwent, AB, exhibited this full sister to Mr. Rusylvia Benelli.

July 11-17, Judge Quest Newberry



Grand Champion Maine-Anjou Female - Taylor Pashulka



Reserve Grand Champion Maine-Anjou Female - AshLynn Duffy



Grand Champion Mainetainer Female - Justin Couch



Reserve Grand Champion Maintainer Female - Bailey Wauters

Two GOET I-80 daughters followed the winner. Caught Ya Lookin RDRL 1C, shown by Riley Pashulka, and Ashley Schmidt's JAR Contessa 8C impressed the judge in a class with no last-place animal. AshLynn Duffy of Lacombe, AB, brought last years' purebred champion back to the two-year-old division. Black Velvet 978B won her division and stayed in the hunt as the Reserve Champion Purebred Female. Her GOET I-80 bull calf was presented the Champion Bull Calf plaque.

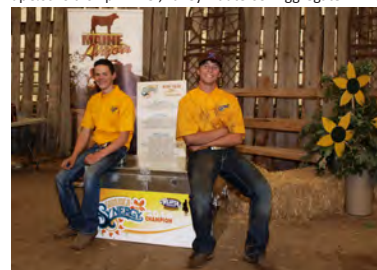
The Commercial AOB Grand Champion was a Monopoly-sired yearling exhibited by Jaymie Thompson of Abbotsford, B.C. Jaymie was also a scholarship winner. Trinity Martin of Stettler, AB, showed the Reserve Champion with a yearling heifer sired by Master of Puppets.

The Grand Champion females travelled to the Calgary Stampede to be on display and compete in the International Youth Livestock Supreme Championship, following the Junior Steer Classic. The Simmental champions were declared the Supreme in both Purebred and Commercial divisions.

Congratulations to all our exhibitors, champions, award winners and scholarship recipients. We hope to see our champions at the UFA Youth Supreme Quest in Bashaw, AB, along with National Young Cattlemen qualifiers Lilly Howell, Alexis Couch, Justin Couch and Bailey Wauters. Western Canadian Show Team representatives will be the teams of Lilly Howell and Lauren Latimer, and Alexis Couch and Brynne Yoder. Good luck!



AshLynn Duffy - Int. scholarship winner, Justin Couch Int. aggregate champion winner, Alexis Couch Int. aggregate runner up & scholarship winner, Bailey Wauters Sr. Aggregate winner



Every Breed Champion received a Weaver tack box, courtesy Irvine Tack & Trailer. Justin Couch & Taylor Pashulka each took one home.



Kelley Whelan presenting Riley Pashulka with his Sr. aggregate runner-up award & Alberta Maine-Anjou Assoc. sponsored gift card draw.



Taylor Pashulka won the Sundown Livestock Transplant \$500 draw towards a donor flush.



Lilly Howell Jr. aggregate winner



Champion Mainetainer Bull Calf
Justin Couch



Res.Champion Mainetainer Bull Calf
Ashley Schmidt



Reserve Champion Mainetainer Mature Cow - Bailey Wauters



Reserve Champion Maine Anjou Yearling Heifer - Riley Pashulka



Reserve Champion Mainetainer Yearling Heifer - Alexis Couch



Champion Mainetainer 2 yr old
Ashley Schmidt



Champion Maine Anjou Bull Calf
AshLynn Duffy

Champion Photos courtesy of Grant Rolston Photography Ltd.
Award photos courtesy of Dede Wise

SUMMER SYNERGY SPONSORS

Trail Boss Sponsors: Canadian Maine-Anjou Association, Sundown Livestock Transplants, Kelley Whelan Designs
Top Hand Sponsors: Alberta Maine-Anjou Association, Dun-Rite Stock & Stables Inc. Matt Lautner Cattle Canada, Kurtis Reid, Colorado Genetics Inc, Wise Maine-Anjou Ranch, Wicklow Enterprises
Wrangler Sponsors: Anchor Cattle Co., Duffy Land & Cattle, Fairland Cattle Co., Ghost Pine Cattle Co., KJS Cattle Co. & Smith Anchor Bar Ranch, Lucky Springs Farms, Miller Show Cattle
NuHaven Cattle Co., Prairie Side Show Cattle, Rees Smith Real Estate Group, Rusylvia Cattle Co., Shuckburg Cattle

July 22, 2016, Judge Cole Giles, Cochrane

Maine-Influence Heifer Calf

1st KKS Mama Forte 601D - Kevin Shuckburgh
2nd Ms Red Four Dees XDW 427D - Keltey Whelan
3rd Simaltas Miss Princess - Kelsey Sim

Maine Influence Yearling Heifer

1st KKS Honey Badger 509C - Kevin Shuckburgh
2nd KKS Miss Fightin Irish 529C - Lindsey Douglas

Maine Influence 2 yr-old Cow/Calf

1st KKS Miss Fightin Irish 411B - Kevin Shuckburgh

Maine Influence Mature Cow/Calf

1st ZMA Miss Speckles 42Z - Kelsey Zimmer
2nd Four Dees XDW 279Z - Keltey Whelan

Grand Champion Influence Female

KKS Honey Badger 509C - Kevin Shuckburgh

Reserve Champion Influence Female

KKS Mama Forte 601D - Kevin Shuckburgh

Maine Influence Bull Calf

1st KKS Middle Man 613D - Kevin Shuckburgh
2nd ZMA Dazzle 14D - Paige Zimmer
3rd ZMAK Downtown 7D - Alyssa Zimmer
4th KKS Pedro 648D - Kevin Shuckburgh

Grand Champion Influence Bull

KKS Middle Man 613D - Kevin Shuckburgh

Reserve Champion Influence Bull

ZMA Dazzle 14D - Paige Zimmer

Purebred Heifer Calf

1st DJ5 Pudge 655D - Kevin Shuckburgh
2nd ZMA Miss Darkei 20D - Erika Zimmer

Purebred Yearling Heifer

1st KKS Miss Fightin Irish 530C - Kelsey Sim
2nd Manitou Candy Cane, Tateun McPherson

Purebred Mature Cow

1st Rapid Creek Miss 2P - Kevin Shuckburgh
2nd Four Dees Jinquette XDW36S - Keltey Whelan
3rd Miss Lilly - Kelsey Sim

Grand Champion Female

Rapid Creek Miss 2P - Kevin Shuckburgh

Reserve Champion Female

KKS Miss Fightin Irish 530C - Kelsey Sim

Purebred Bull Calf

1st CLG 80 Proof 624D - Kevin Shuckburgh
2nd Four Dees Big Jake XDW442D - Keltey Whelan
3rd KSIX 1D - Kevin Shuckburgh

Purebred Mature Bull

1st ZMA Boomtown 610B - Kelsey Zimmer

Grand Champion Bull

ZMA Boomtown 610B - Kelsey Zimmer

Reserve Champion

CLG 80 Proof 624D - Kevin Shuckburgh



Grand Champion Influence Female
KKS Honey Badger 509C - Kevin Shuckburgh



Grand Champion Influence Bull
KKS Middle Man 613D - Kevin Shuckburgh



Reserve Champion Influence Female
KKS Mama Forte 601D - Kevin Shuckburgh



Reserve Champion Influence Bull
ZMA Dazzle 14D - Paige Zimmer



Grand Champion Female
Rapid Creek Miss 2P - Kevin Shuckburgh



Grand Champion Bull
ZMA Boomtown 610B - Kelsey Zimmer



Reserve Champion Female
KKS Miss Fightin Irish 530C - Kelsey Sim



Reserve Champion
CLG 80 Proof 624D - Kevin Shuckburgh

THANK YOU TO OUR SPONSORS!

Alberta Maine-Anjou Association, Central Alberta Hay, Contact Chemicals Inc, Red Deer County, ID Apparel, Twine Design & Graphics, Malcom Murray Bale Hauling, Central Alberta Co-Op, Deagle Cattle Company Ltd, Douglas Maines, Four Dees Ranch, Bry-Ann Farms, CJ Cattle Co, Hughalta Farms Ltd, Mel's Maines, Outlaw Livestock, Rapid Creek Ranch, Shuckburgh Cattle Company, Simalta Maines, Stoneman Cattle Co, Wildberry Hills Maine-Anjou, Diamond D Livestock



ALBERTA JUNIOR MAINE-ANJOU SHOW

by Lee-Ann Zimmer

Maine-Influence Heifer Calf

1st Ava Greiner - KKS Mama Forte 60D
2nd Eric Coleman - Simalta Miss Princess

Maine-Influence Yearling Heifer

1st Kathryn Dolliver - KKS Honey Badger 509C
2nd Lindsey Douglas - KKS Miss Fightin Irish 529C

Maine-Influence 2 year Old Cow/Calf

1st Faith Shuckburgh - KKS Miss Fightin Irish 441B
2nd Evan Patriquin - Fenske's Ms 39B

Maine-Influence Mature Cow/Calf

1st Kelsey Zimmer - ZMA Miss Speckles 42Z

Maine-Influence Grand Champion Female

Faith Shuckburgh - KKS Miss Fightin Irish 441B

Maine-Influence Reserve Grand Champion Female

Kathryn Dolliver - KKS Honey Badger 509C

Maine-Influence Grand Champion Bull

Chase Dolliver - KKS Middle Man 613D

Maine-Influence Reserve Grand Champion Bull

Paige Zimmer - ZMA Dazzle 14D

Purebred Heifer Calf

1st - Kathryn Dolliver - DJS Pudge 627D
2nd - Erika Zimmer - ZMA Miss Darkie 20D

Purebred Yearling

1st - Ryan Coleman - KKS Miss Fightin Irish 530C
2nd - Garrett McPherson - Manitou Candy Cane

Purebred Mature Cow/Calf

1st - Faith Shuckburgh - Rapid Creek Miss 2P
2nd - Lindsey Douglas - Miss Lilly

Purebred Grand Champion Female

Faith Shuckburgh - Rapid Creek Miss 2P

Purebred Reserve Grand Champion Female

Ryan Coleman - KKS Miss Fightin Irish 530C

Purebred Bull Calf

1st - Ava Greiner - CLG 80 Proof 624D
2nd - Cole Shuckburgh - KSIX 1D

Purebred Mature Bull

1st - Kelsey Zimmer - ZMA Boomtown 610B

Purebred Grand Champion Bull

Kelsey Zimmer - ZMA Boomtown 610B

Purebred Reserve Grand Champion Bull

Ava Greiner - CLG 80 Proof 624D

PRINT MARKETING

Erika's Farm Fresh Butt Nuggets



These Butt Nuggets come in different colors: pinks, greens, blues, khakis \$2.50/dozen



Call Erika
780-374-2295
daysland, AB

1st Junior
Erika Zimmer



Shuckburgh
Cattle Company



Ava Greiner and Cole Shuckburgh representing Shuckburgh Cattle at the Canadian Junior Maine-Anjou Show- 2015.

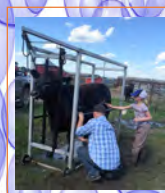
Our Show string for autumn 2015, including the grand champion Maintainer Female from Farmstar International 2014-2015.

Come to Shuckburgh Cattle for some of the best Maine-Anjou cattle around!!

Cole Shuckburgh:
kshuck@telus.net
403-742-6475

2nd Junior
Paige Zimmer

Alyssa's Cattle Washing Services



At Alyssa's Cattle Washing Services

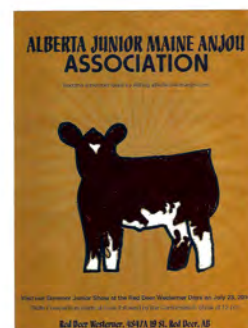
1st Intermediate
Alyssa Zimmer



2nd Intermediate
Eric Coleman



1st Senior
Ryan Coleman



2nd Senior
Tateum McPherson

ALBERTA JUNIOR MAINE-ANJOU SKILLS RESULTS

by Lee-Ann Zimmer

We had 20 junior members attend the show, had a weekend filled with skills competitions, the junior Maine-Anjou show, the Open Maine-Anjou show, the All Breeds Junior Show, minute-to-win-it games, the Junior Meeting, and a pizza party, along with some time at the mid-way.

Team Grooming

1st - Kathryn Dolliver, Eric Coleman, Paige Zimmer
2nd - Chase Dolliver, Alyssa Zimmer, Corbyn Stoneman, Evan Patriquin

Team Judging

1st - Chase Dolliver, Alyssa Zimmer, Corbyn Stoneman, Evan Patriquin
2nd - Faith Shuckburgh, Garret McPherson, Ava Greiner, Erika Zimmer

Juniors

(Age 9 & under as of Jan 1, 2016)

Photography

1st - Ava Greiner
2nd - Paige Zimmer

Print Marketing

1st - Erika Zimmer
2nd - Cole Shuckburgh

Sales Talk

1st - Ava Greiner
2nd - Cole Shuckburgh

Showmanship

1st - Paige Zimmer
2nd - Ava Greiner

Intermediate

(Age 10-14 as of Jan 1, 2016)

Photography

1st - Blake Stoneman
2nd - Faith Shuckburgh

Print Marketing

1st - Alyssa Zimmer
2nd - Eric Coleman

Sales Talk

1st - Evan Patriquin
2nd - Corbyn Stoneman

Showmanship

1st - Faith Shuckburgh
2nd - Kelsey Zimmer

Seniors

(Age 15-20 as of Jan 1, 2016)

Photography

1st Ryan Coleman
2nd Kathryn Dolliver

Print Marketing

1st Ryan Coleman
2nd Tateum McPherson

Sales Talk

1st Tateum McPherson
2nd Ryan Coleman

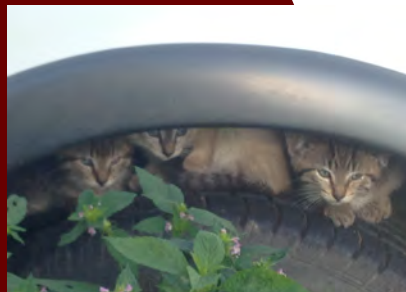
Showmanship

1st Tateum McPherson
2nd Ryan Coleman

Photography Contest Winners



1st Junior Photography
Ava Greiner



2nd Junior Photography
Paige Zimmer



1st Intermediate Photography
Blake Stoneman



2nd Intermediate Photography
Faith Shuckburg



First Senior Photography
Ryan Coleman



Second Senior Photography
Kathryn Dolliver

Congratulations to all participants !

Rapid Creek Ranch



**Welcome to our farm,
Replacements for sale!**

Brian & Sharon Brown RR #5, Wetaskiwin, AB
Res: 780.352.9934 Cell: 780.360.1050
Email: rcrmains795@gmail.com



Millarville Stockland
Clara Blatz, Minie Donuts



Hanna Distric Show
Spencer McMillin



Ponoka District 4-H Beef Show & Sale
Lisa, Thomas, Doug & Kaitie Roxburg



Hanna Distric Show
Sydney McMillin



Bailey Wauters, Redimade 4-H Beef
Lethbridge & District 4-H Grand Champion Steer
Taber Jr Livestock Classic Grand Champion
Chinook Jr Livestock Grand Champion
Making Champions-Heavy Weight Champion
Olds Spring Classic Grand Champion Jr Steer
Calgary Stampede Runner-up Heavy Weight Class



Hanna Distric Show
Jilian Moench



Grand Champion Jackpot Heifer & Champion Maine-Anjou at Cry-Canada's Richest Youth Show, Olds
Miss Pusylvia Calla, Making Champions - Grand Champion Maine-Anjou and Supreme Jackpot Heifer, Lacombe
Reserve Junior Jackpot Heifer, Vermilion Fair , Open Reserve Jackpot Heifer, Vermilion Fair
Congratulations to Tyson Pashulka's recent grade 12 graduation

GARY D SMITH MEMORIAL SCHOLARSHIP

Gary D. Smith was a well-known figure in the purebred cattle industry throughout the world. Gary passed suddenly in November 2015. He was known originally for being one of the three brothers of Poplar Haven Farms of Wimborne, Alberta which was a mixed grain farm and bred a world renowned Maine-Anjou herd. Later, with his family, wife Kristine, son Guy and daughter Kelly NuHaven Cattle Co of Pine Lake was formed and continue being Maine Anjou and Club Calf Producers.

Gary was a highly regarded international livestock genetics exporter. In his 30 year career of exporting he was able to open markets and ship either purebred livestock or genetics to countries such as Mexico, Brazil, Columbia, China, Russia and Kazahakstan to name a few. He was also a sought after livestock judge and judged many shows such as the Sidney Royal, the Toronto Royal, as well as shows in Columbia, Mexico, local 4H clubs and many of the major shows in Canada.

After Gary's passing the family wanted to honor his life's work by helping the youth of the industry which he believed in. Besides being honest and trustworthy, the keys to his success were to be an excellent marketer as well as to be able to select the right type of animals for his customers. Summer Synergy provides the perfect opportunity to meld these qualities with their Beef Judging and Marketing competitions. The Gary D. Smith Memorial Scholarship is awarded to the highest combined scores of those two competitions. Brandon Fraser a Hereford breeder from Cochrane, AB was the first recipient at Summer Synergy 2016. He has had many success's in and out of the show ring and the Smith family were proud to award this scholarship to this young man.



LEAVING HIS MARK...



**11TH ANNUAL
WELDON PROSPECT
STEER & HEIFER SALE
OCTOBER 30TH, 2016**
WATCH FOR PICTURES
ON FACEBOOK
CONTACT US FOR
MORE INFO

HE SELLS!



AMEN X ANGUS

**THANK YOU TO ALL
OF THE BREEDERS WHO
PURCHASED WINGMAN
SEMEN PACKAGES.
LOOKING FORWARD TO
HIS 2017 CALF CROP!**

WATCH FOR HIM THIS FALL!



WINGMAN X MHC 7Y



WINGMAN X MHC 1855Y

MYLES, COLLEEN, PAISLEY & RHETT HANSEN

BOX 57 WELDON, SASKATCHEWAN S0J 3A0

306-864-2535 306-864-7780

mylesandcolleen@hotmail.com

www.hansenlivestock.com

**HANSEN
LIVESTOCK**



UPCOMING EVENTS

September 21-25, 2016

September 22nd, Ontario Maine-Anjou Association Provincial Show, Linsey, ON

September 24, 2016

Colours of the Fall Prospect Steer & Heifer Sale
Hiller Hay Farms, Calmar, AB

October 8 -10, 2016

Vandy Cattle - Winners Circle Online Sale

October 8 - 9, 2016

Rusylvia Cattle Co - Round Two Sale

October 8, 2016

Back to School Prospect Steer & Heifer Sale
Rawluk Livestock & Horner Cattle Co

October 30, 2016

11th Annual Weldon Prospect Steer & Heifer Sale
Weldon, Saskatchewan

November 9-13, 2016

Northland Farm Fair - Maine-Anjou Show
Edmonton

November 21-26, 2016

Canadian Western Agribition-Maine-Anjou Show
Regina, Saskatchewan

December 3, 2016

Gilcroft Farms Fall Sale
Hoards Station Sale Barn, Campbellford, ON

December 10, 2016

Wilkinridge Stock Farm - Annual Fall Female Sale
Ridgeville, MB

December 16, 2016

Manitou - Female Sale
Marsden, Saskatchewan

April 1, 2017

Deagle Cattle Co - Annual Bull Sale

◇◇ CMAA CLASSIFIED ADS WILL BE UPLOADED TO THE CMAA WEBSITE & CMAA FACEBOOK FOR \$100! PLEASE CONTACT THE OFFICE FOR MORE INFO!

Martinell's Fullblood Maines


ALAN MARTINELL
6527 SHILOH RD.
NEWTON, ON, LOA 1J0
905.983.5177

Wise
Maine-Anjou Ranch

Leta, Dede, Dallas, Keltey

Ph: 403-935-4395
Ph/Fax: 403-935-4402
Cell: 403-630-5971

Box 55 Irricana, AB, Canada T0M 1B0
www.wisemaines.com

 www.facebook.com/wisemaineanjouranch

DUFFY LAND AND CATTLE
MAINE ANJOU

CLAY DUFFY

403.885.2234 | 403.506.7124
cduffy868@hotmail.com
Joffre, Alberta, Canada

Available for
YOU
for \$50.

Hosted by
sconlinesales.com



Thank you and
congratulations to our
past customers!

FIND YOURSELF IN THE

Winner's Circle

Give us a call and come view the calves
after Sept. 15 – We would love to help you
in the selection of your next show calf.

OCTOBER

8

12PM - DARK
Open House,
Food, Drinks and
Hospitality



MAB STEER



WALKS THIS WAY STEER



WALKS THIS WAY HEIFER

OCTOBER

10

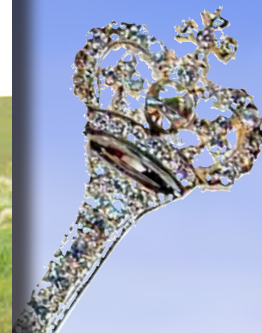
BIDS OPEN
sconlinesales.com

For more information or to view the calves, contact:
Justin VanDeWoestyne • Benson, Saskatchewan, Canada
vandycattle@hotmail.com • 306.461.6031 • www.vandycattle.com





LSCC Daddy's Lil Lady 9162W (Sugar)



2014 CWA Senior Champion
LSCC Daddy's Lil Lady 9162W with
LSCC Daddy's Lil Girl 22B at side

The Queen and her heirs...

Sugar is our leading donor...so excited to watch her daughters follow in her footsteps!



LSCC Daddy's Lil Girl 22B



LSCC Sweet As Sugar 80C

**LIGHTNING STRIKE CATTLE CO./
McCORMACK FAMILY RANCH**
Scott & Carolyn McCormack
Grenfell, SK (306) 697-2945
www.mccormackfamilyranch.com



MFR Genetic Destination
7th Annual Bull Sale
Tuesday, March 28, 2017 1 P.M.
McCormack Family Ranch, Grenfell, SK

Red & Black Simmental ~ Maine-Anjou